



BIG FOOT SYSTEMS

Rooftop building services support systems



Simply a better way 



Introducing the Lock 'n' Load

- The ultimate takeaway – one box does it all in less than 15min
- Lightweight, pre-fabricated system with unit GRP connectors
- Quick and effective support for mini split units



ANCILLARIES



AIR CONDITIONING



AIR HANDLERS



CHILLERS



CUSTOM

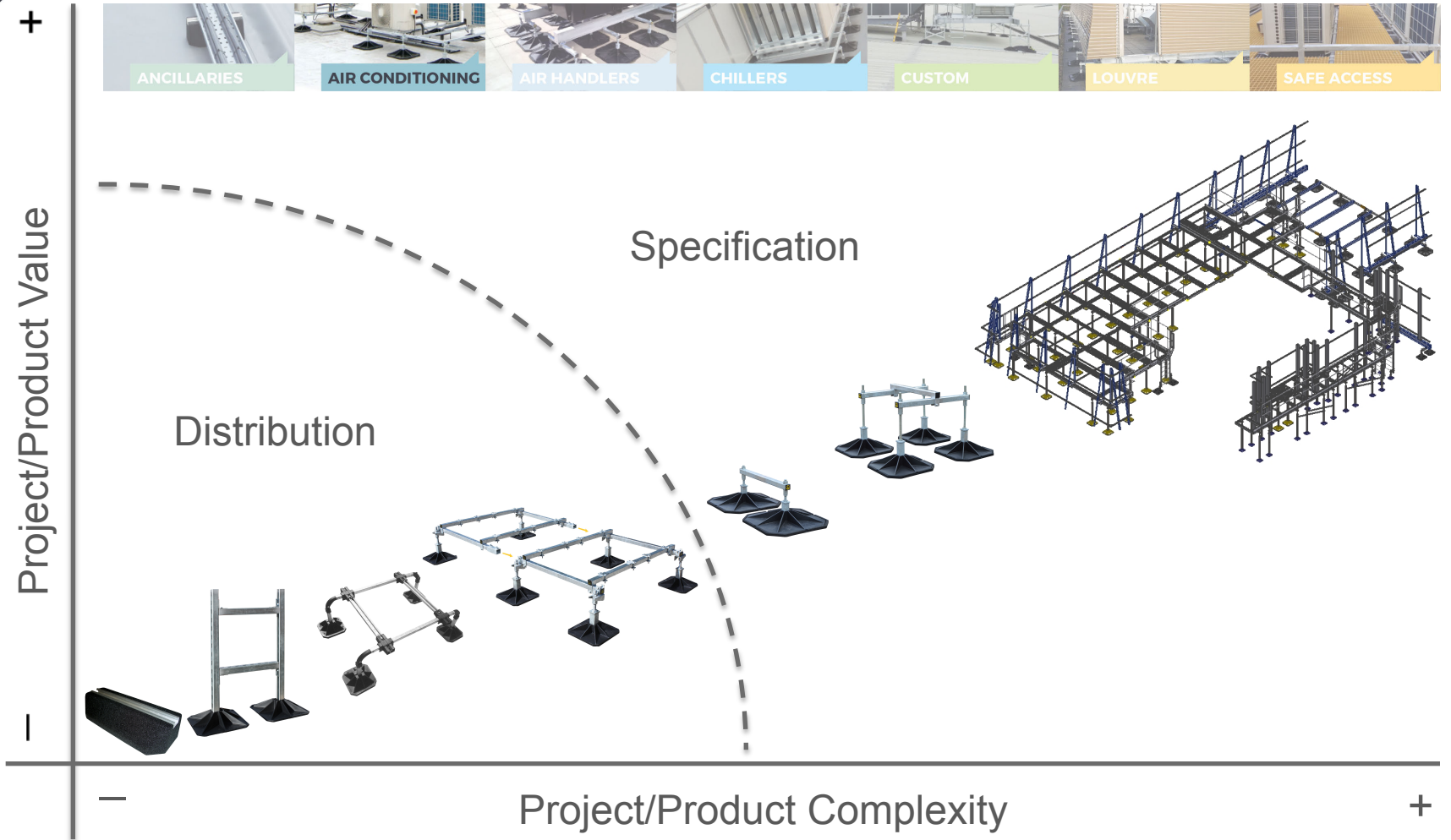


LOUVRE



SAFE ACCESS

Product Position





Features & Benefits

Features:

- Slotted channel cross bars
- Drop on cross bars
- Big Foot feet
- Vertical adjustment
- Hot dipped galvanised metal work
- 3 height options & extension kits
- Tower/double stack system
- Fixings included

Benefits:

- Compatible with industry standard fittings
- Infinite adjustments along the end bar to suit unit
- Load distribution onto the mounting surface
- Ensures a level finish for unit mounting
- 10 year guarantee as standard
- Options to suit a variety of applications/restrictions
- Multiply unit installation in restricted space
- One, easy to handle, box does it all
- Quick and easy to install



The Range

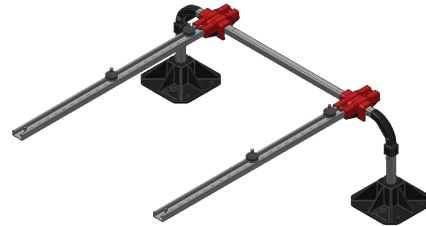
Lock 'n' Load Frames

- 305mm/12" high
- 450mm/18" high
- 600mm/24" high



Lock 'n' Load Extenders

- 305mm/12" high
- 450mm/18" high
- 600mm/24" high



Lock 'n' Load Tower

- 305mm/12" high level 1
- 1426mm/56" high level 2





Packaging



Lock 'n' Load base frames

- Single box 960 x 230 x 140mm @ 9.9kg (12"), 13.5kg (18") & 14.4kg (24")
- Pallet quantity 50no. @ 1200 x 1000 x 1550mm
- Pallet weight 520kg (12"), 695kg (18") & 745kg (24")

Lock 'n' Load extension kits

- Single box 960 x 230 x 130mm @ 7.5kg (12"), 11.0kg (18") & 11.5kg (24")
- Pallet quantities 50no. @ 1200 x 1000 x 1400mm
- Pallet weight 395kg (12"), 570kg (18") & 595kg (24")

Lock 'n' Load tower

- Single box 1000 x 285 x 160mm @ 26.2kg
- Pallet quantity 32no. @ 1200 x 1000 x 1500mm @ 850kg





Simply a better way
Thank You